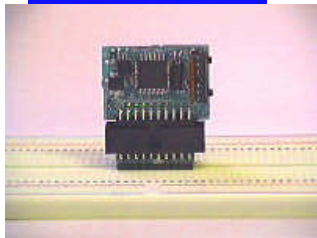
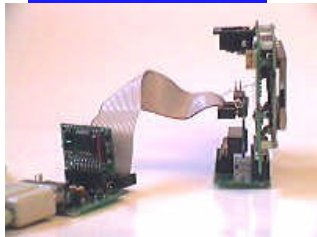
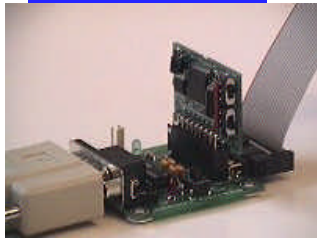
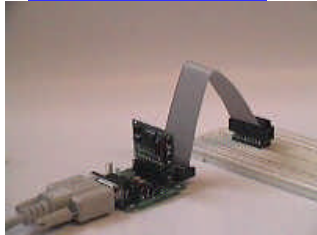


MicroStamp 11

World's Smallest 68HC11 Microcontroller Module!



MicroStamp11™ is a powerful, compact micro-controller board, based on Motorola's popular 68HC11 8-bit MCU. Featuring up to 32K SRAM and up to 32K EEPROM, **MicroStamp11™** provides ample memory for developing applications in assembler, BASIC, or C.

The 68HC11 provides an excellent selection of hardware features, coupled with an easy-to-use architecture and well-rounded instruction set. One of the most popular 8-bit MCUs in the world, the 68HC11 has a wealth of applications and software tools available.

This combination of a powerful, full-featured 68HC11 with ultra-miniature packaging and low cost make MicroStamp11 an excellent choice for hobbyists, students, and engineers, in a wide range of applications from handheld instruments to microrobotics..

FEATURES:

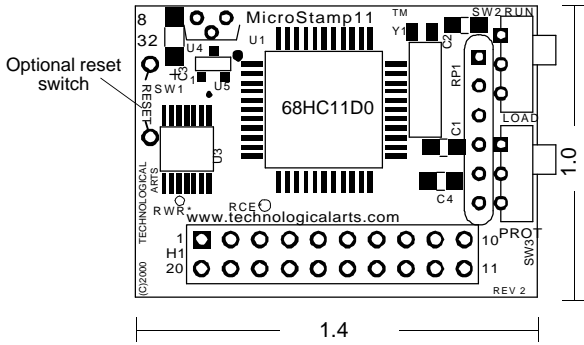
- 68HC11D0 MCU running in expanded mode
- 8 MHz crystal (optional 9.8304 MHz "Turbo" version)
- 192 bytes SRAM and 8K or 32K EEPROM
- 32K SRAM + 32K EEPROM (64K version)
- hardware EEPROM write protect switch
- EEPROM software data protection (optional)
- convenient BOOT/RUN switch
- on-board 5V regulator
- low-current operation
- power-saving WAIT and STOP modes
- standard baud rates up to 9600 (38400 with "Turbo" version)
- low-voltage inhibit reset circuit
- all input, output, and interrupt lines accessible
- standard 20-pin I/O connector pattern
- available with several connector options
- stackable vertically or horizontally
- prototyping cards, backplanes, and application cards available
- compact 1" by 1.2" modular design
- easy code-loading via low-cost Docking module
- programmable in assembler, C, BASIC, etc.

Toronto, Canada
Phone: +1(416) 963-8996
Fax: +1(416) 963-9179
www.technologicalarts.com

**Technological
Arts**

MicroStamp11™

REVISION 2



MicroStamp11™

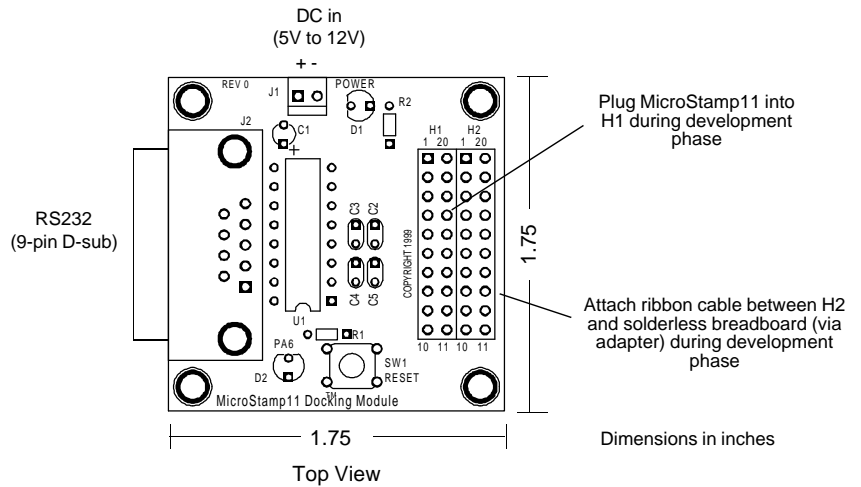
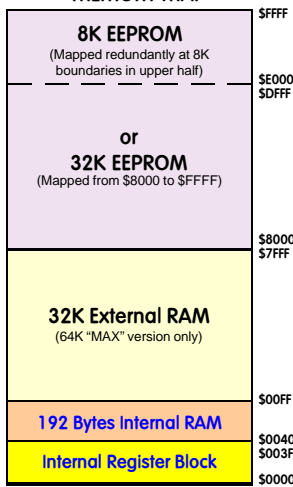
Shown 150% of actual size

Pin Functions

PIN #	NAME	PIN #	NAME
1	PA7/PAI/OC1	20	PD0/RxD
2	PA6/OC2/OC1	19	PD1/TxD
3	PA5/OC3/OC1	18	PD2/MISO
4	PA4/OC4/OC1	17	PD3/MOSI
5	PA3/IC4/OC5/OC1	16	PD4/SCK
6	PA2/IC1	15	PD5/SS*
7	PA1/IC2	14	XIRQ*
8	PA0/IC3	13	IRQ*
9	RESET*	12	+5VDC
10	Vin	11	GROUND

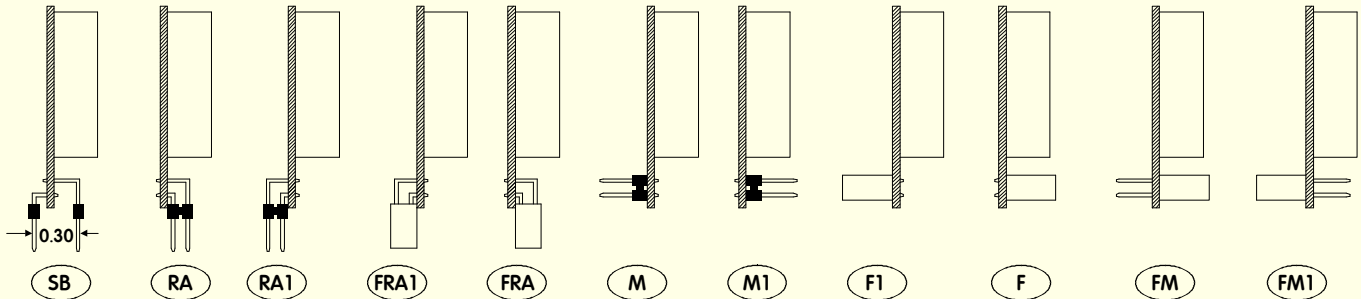
* INDICATES "ACTIVE LOW"

MEMORY MAP



MicroStamp11™ Docking Module

Standard Connector Options



Starter Packages*:

- 8K Standard: #MS11SP8K
- 32K Standard: #MS11SP32K
- 64K MAX (32K EE + 32K RAM): #MS11SP64K
- 8K Turbo (9.83MHz): #MS11SP8KT9
- 32K Turbo (9.83MHz): #MS11SP32KT9
- 64K Turbo (9.83MHz) MAX: #MS11SP64KT9



Modules:

- 8K Standard: #MS11M8K-□
- 32K Standard: #MS11M32K-□
- 64K MAX (32K EE + 32K RAM): #MS11M64K-□
- 8K Turbo (9.83MHz): #MS11M8KT9-□
- 32K Turbo (9.83MHz): #MS11M32KT9-□
- 64K Turbo (9.83MHz) MAX: #MS11M64KT9-□
- Docking Module: #MS11DM-□-□ (supplied with M1-RA unless requested otherwise)

NOTE: all Starter Packages include MicroStamp11 with -FRA connector option, Docking Module with M1-RA connector options, 20-pin ribbon cable, solderless breadboard adapter, serial cable, manual, documentation, and a disk with assembler, BASIC, C, PCBug11, download utilities, programs, and more. Alternative connector options are possible--specify the desired connector option for the module, and the appropriate Docking Module and adapters will be supplied.