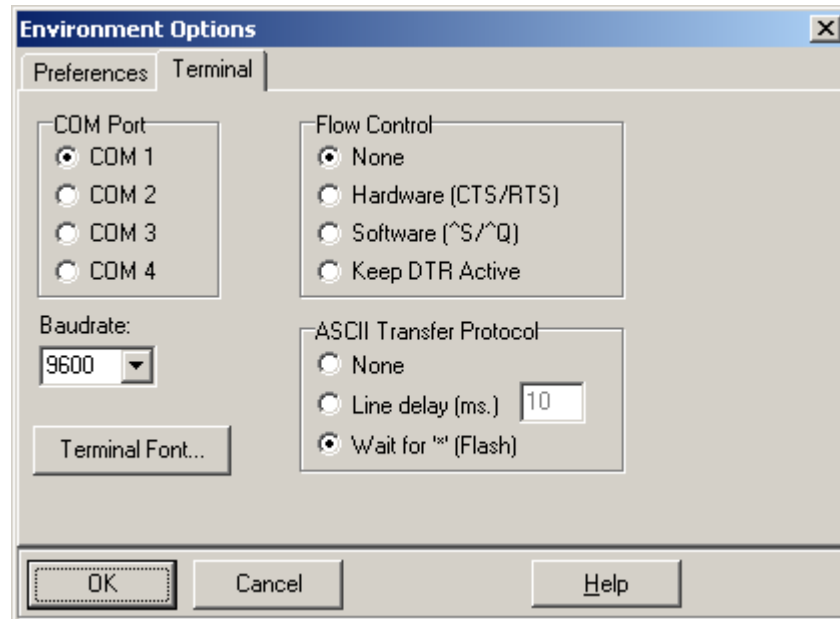


How to Test the 9S12MX1

Use an Adapt9S12E128 already programmed with the DEMO and ICC12. Set BAUD = 9600 as shown.



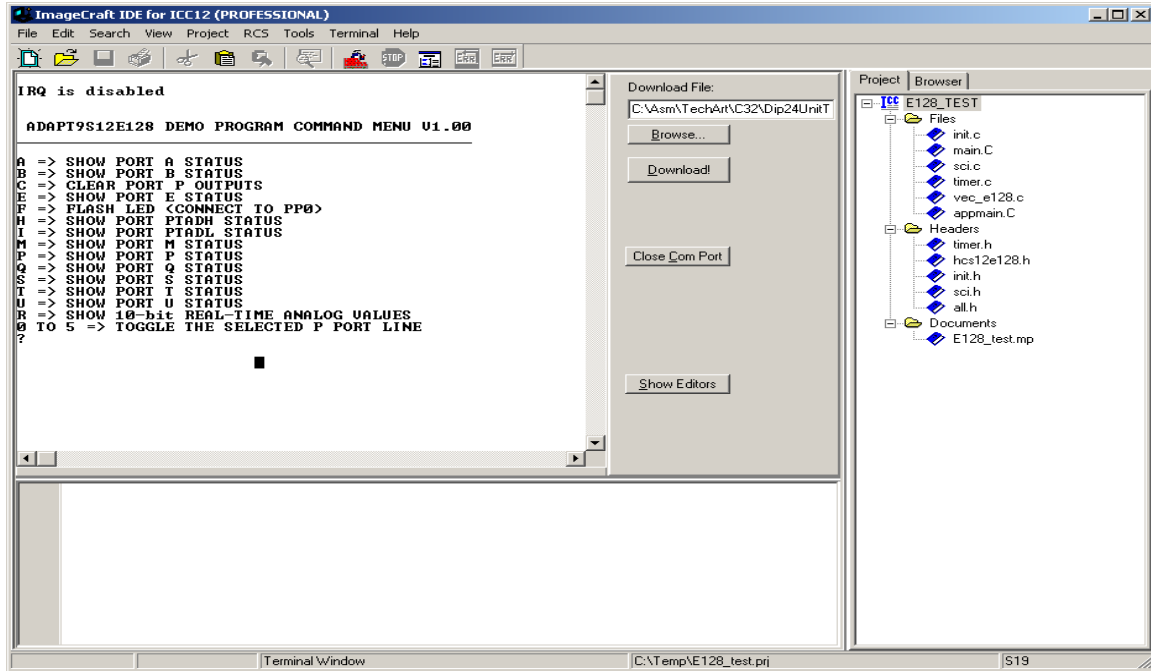
Set the jumpers on the 9S12MX1 Card valid for 256 and 1Mbyte memory arrangement.

1. **JB1 – 1.2 RAM CS1* check select**
2. **JB2 – 1.2 RAM CS2 check select**
3. **JB5 – 3.4 Latch decoding**
4. **JB6 – 1.2 A15/XA15 address select, XA15 for PAGING**
5. **JB7 – 1.2 A14/XA14 address select, XA14 for PAGING**

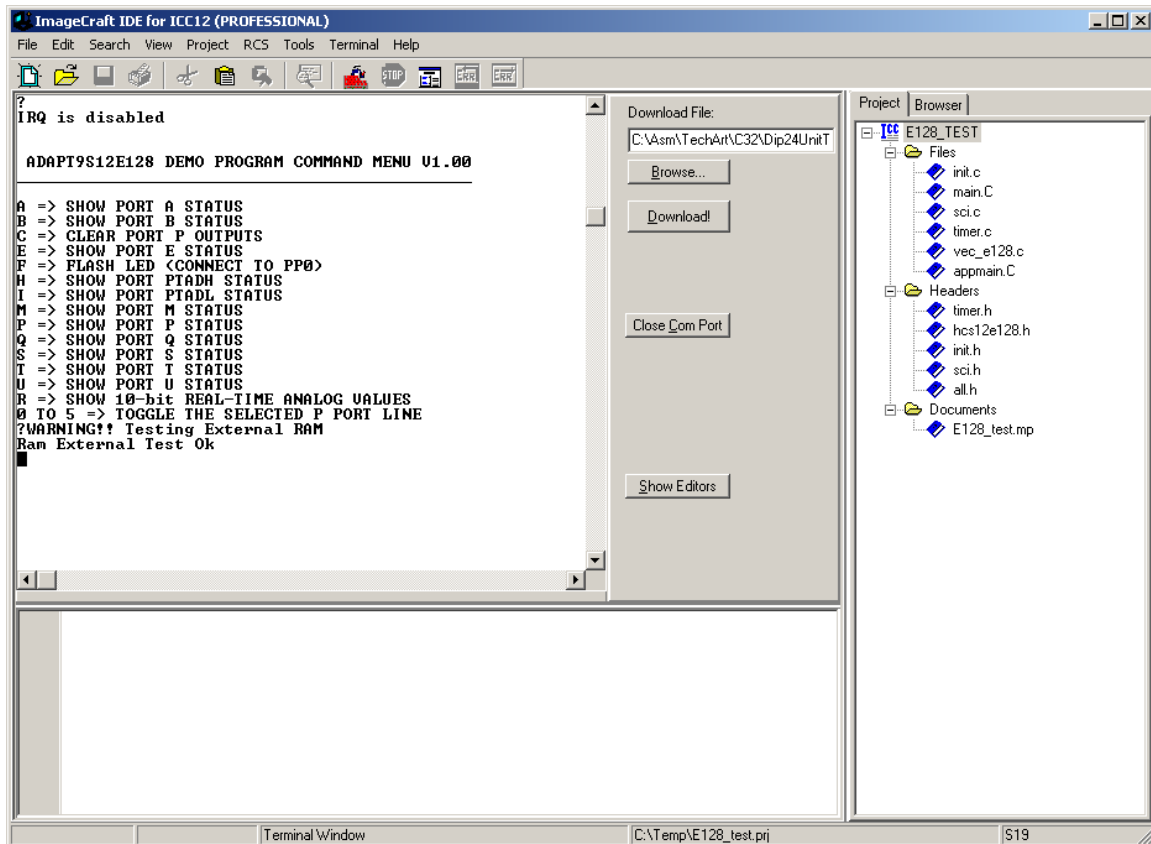
Set Write/Protect Switch to *Write* position.

Warning! Make sure to Align H2 of Adapt9S12E128 and P2 of 9S12MX1 properly. Recheck the alignment several time to remove doubts.

Run the Demo program



To initiate test press the letter V



When and If there are errors.

1. Check Write protect switch – do verify position
2. Jumper settings – do check and compare jumper settings
3. Pins shorted – do visual check
4. Adapt9S12E128 H2 and 9S12MX1 P2 headers – do check alignment
5. Use a different Adapt9S12E128